



KIMBERLEY HALL

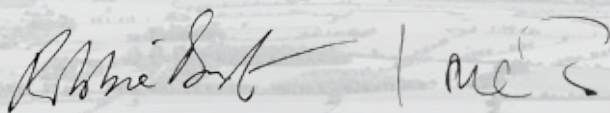
NORFOLK

THE VENUE FOR ALL SEASONS

Welcome to Kimberley

For over 300 years Kimberley has played host to a multitude of gatherings of all kinds. As the current custodians of this magnificent family home, it is an honour to share these historic spaces and spectacular landscape with you and your guests.

With best wishes

Handwritten signatures of Robbie Buxton and Iona Buxton in black ink. Robbie's signature is on the left and Iona's is on the right, separated by a vertical line.

Robbie Buxton

Iona Buxton

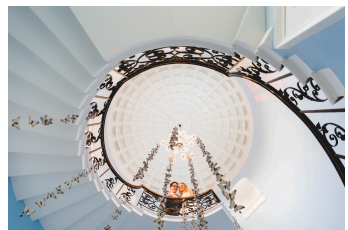




About Kimberley

Built in 1712 during the reign of Queen Anne, Kimberley sits at the centre of a 700-acre park laid out in 1778 by the nation's most famous landscape designer 'Capability' Brown. The house boasts spectacular views past grazing cattle and Norfolk's greatest concentration of ancient oaks, to a large lake at the bottom of the River Tiffey valley.

Centrally located in Norfolk, 9 miles west of Norwich and close to arterial road, rail and air links (plus a private airstrip), Kimberley is ideally positioned for all kinds of events should you wish to host a wedding, customer care day, meeting, film or photo shoot, private party, product launch or large-scale open-air event. These are conducted on an exclusive basis with the privacy you would expect of a family home.





Say 'I Do' *At Kimberley*

Kimberley provides a romantic and entirely private setting all year round for your special day with a multitude of beautiful spaces both inside and out that take your guests on a theatrical journey whatever the weather. The majestic entrance hall and central staircase lead into the Music Room that is licensed for civil ceremonies. This light and elegant space with its exquisite 18th century plasterwork and large arched window looking towards the yew trees offers the grandeur and sincerity befitting the commitments made at a marriage ceremony.

The Music Room leads into the terraced garden (that can also be used for an external ceremony) past the fabulous spiral staircase that serves as a private route to your accommodation on two levels. For dining and entertainment the vernacular-chic West Wing provides a stylish and relaxed environment with its bespoke marble bar, computer-controlled LED lighting and laser system, giant mirror ball and sumptuous lounge upstairs with its balcony overlooking the dance floor.

Round tables offer flexible seating for 130+ for your wedding breakfast or up to 250 for an evening reception (with additional capacity upstairs). There is also unlimited space in the garden for a marquee amongst the yew trees with beautiful views of the lake.





Corporate Hospitality

Events, Parties, Film & Photo Shoots

For over 30 years the team at Kimberley has hosted a multitude of differing events so has a considerable depth of knowledge and experience in organising and assisting you in running whatever occasion you wish to host here. The house and grounds offer a wide diversity of spaces from the classical to the vernacular which can be used as break-out areas to cover any type of large-scale or intimate event. Whilst the house has a maximum capacity, the grounds can host very substantial open-air events and for over three decades was home to a boutique music and creative arts festival.

No two events are the same so we tailor spaces and costs accordingly. We are also able to offer substantial ancillary areas for storage and other purposes and have a 3x3-metre projector screen set up in the West Wing for conferences, management training, team-building days, exhibitions and product launches.

Whether you wish to host a private dinner in front of the beautiful log fire, a Christmas, birthday or anniversary party beneath the giant rotating mirror ball, or come together for a family christening, wake or summer garden party, we can cater and style for all kinds of special events throughout the year and at relatively short notice.



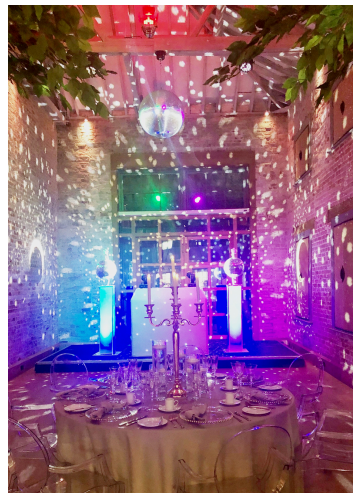


Food & Drink

We believe it is important for you to have flexibility so we have a list of carefully selected caterers who offer beautiful menus and professional staff for your event be this a formal sit-down, garden party, or more informal dining occasion with street food options or afternoon tea, bowl food, hog roasts or sharing feasts.

Our stunning marble-topped bar, back-lit with colour changing LED lighting, can deliver more or less anything you want. Additionally our bar manager will gladly put together a customised cocktail and drinks plan to suit your tastes. Our extensive wine list has been carefully put together to offer something for all tastes and budgets.

We also offer a flexible package to include canapes, three-course wedding breakfast, evening food, arrival drinks, wine with your meal and a toast drink, allowing you to spend more time organizing the finer details of your day.





Bronze

This is perfect for couples looking for an elegant celebration with flexibility to create your special day:

Tables and chairs for up to 150 guests set up in advance

A three hour set-up window the previous day

A choice of four specially-selected caterers for your wedding breakfast

Flexibility to hire food trucks for the evening

Wedding co-ordinator for help and advice with planning before, during,
and after your big day

Fully-staffed bar after your ceremony until midnight

Accommodation can be booked separately; full house booking is required
during high season

Nominated Caterers for Bronze package

Mackenzie-David Events

Rebecca Mackenzie

M: 07460 400276

T: 01986 893991

Email: rebecca@mackenzie-david.co.uk

Website: www.mackenzie-david.co.uk

Garden Kitchen Catering

Alex Firman

T: 01603 784500

M: 07787 180400

Email: food@gardenkitchencatering.co.uk

Website:

www.gardenkitchencatering.co.uk

Espresso

Roland Schreiber

T: 01603 768881

M: 07876 740579

Email: orders@espresso-online.co.uk

Website: www.espresso-online.co.uk

Brasteds

T: 01508 491112

Email: enquiries@brasteds.co.uk

Website: www.brasteds.co.uk



Silver

Fancy a more luxurious experience? Our silver package includes everything in the bronze package, plus additional services and amenities to make your wedding day even more special (this is for a minimum of 80 guests)

Two drinks per guest for your drinks reception – alcoholic/non alcoholic
Selection of five canapés

Three-course wedding breakfast and evening food

Table linen, crockery, and cutlery (can be upgraded to match your colour scheme)

Half a bottle of wine per guest from our carefully selected list

Glass of prosecco to toast

Disco from 8pm until midnight, with in-house DJ, laser and lighting

Two nights accommodation in the main house for 16 guests with breakfast



Gold

Perfect for making that special day last longer and for even more guests.

This package includes everything in the Silver Package, plus:

Extended set-up period of four hours on the previous day

All accommodation for two nights across the estate for up to 44 guests, including the Hall (16- 18), the Garden Cottage (12), the East Wing (6) and the East and West Lodges (4-8)

Breakfast hampers for guests staying in the Garden Cottage, East Wing and the East and West Lodges

Choice of indoor or outdoor ceremony (must be confirmed in advance)

Garden games to enjoy during the summer

Giant Christmas tree in the hall in December, plus two additional trees

Speaker and microphone available for your speeches



Platinum

Do you wish to extend your wedding experience over three days?

Our Platinum Package provides you with all of this. Take the wedding stress away with extra preparation time, a leisurely breakfast and an extended checkout time to bid your guests farewell. This package includes everything in the Gold Package, plus:

The Day Before

Arrive at midday, with a glass of prosecco in hand, set up your name cards, seating plans and any finishing touches

Settle into your accommodation and welcome your guests from 3pm

Enjoy the evening with your on-site guests, either in the Music Room or the private gardens (why not hire a food truck or talk to us about providing a buffet)

Bar drinks will be available from 6pm–11pm

Your Wedding Day

Each property has a continental breakfast supplied

Wedding cake, stand and knife included (can be upgraded)

Table centre-pieces and ceremony table-top table flowers included (can be upgraded)

Complimentary prosecco and chocolates in the bridal suite

Bar available one hour before your ceremony

Access to the private Bird Garden for photographs by the ornamental fountain

The Day After

Enjoy a continental breakfast in the West Wing for all your guests

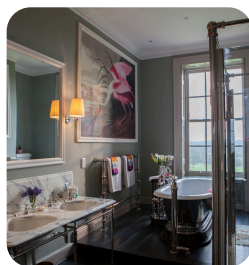
Check out at 1pm, allowing more time for you to say goodbye and to collect all your belongings

Accommodation across the estate may be booked for a third night to extend your celebrations

Wedding Packages

Planning a wedding can be both an exciting and overwhelming experience. To help make your special day as seamless and memorable as possible, we offer a range of wedding packages designed to suit different requirements and preferences.

All packages offer exclusive use of Kimberley Hall with its multitude of spaces on your wedding day, including the Music Room with its historic plasterwork and grand pianos for your ceremony, the private gardens with extensive views of the lake and the double-height West Wing for your wedding breakfast and evening party.



PLATINUM

High Season
Jun-Aug

£31,995

Mid Season
*April, May,
September, October
& December*

£30,495

Low Season
*January, February,
March & November*

£28,500

Gold

High Season
Jun-Aug

£25,995

Mid Season
*April, May,
September, October
& December*

£24,495

Low Season
*January, February,
March & November*

£22,500

Silver

High Season
Jun-Aug

£21,495

Mid Season
*April, May,
September, October
& December*

£19,995

Low Season
*January, February,
March & November*

£18,000

BRONZE

High Season
Jun-Aug

£6,600

Mid Season
*April, May,
September, October
& December*

£5,400

Low Season
*January, February,
March & November*

£3,600

Prices include VAT

For a mid-week booking we offer a £1,000 discount

Prices based on 80 guests, additional guests £120 pp, children £60 (bronze excluded)



Accommodation

The Hall

Sleeps 16-18

The Hall offers sumptuous rooms for you and your guests on two interconnecting floors. These in turn lead directly down to the event spaces on the ground floor and garden via the beautiful spiral stair that is your own private access.

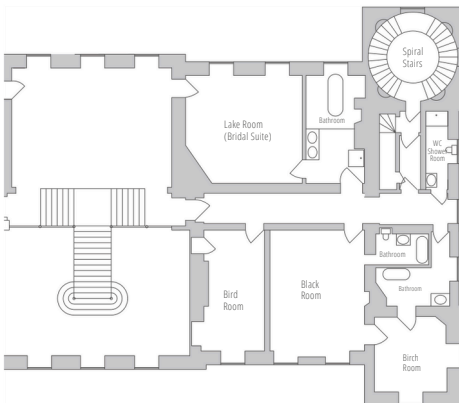
The four rooms on the first floor consist of a lavish four-poster bridal suite with a magnificent Drummonds en-suite bathroom that has a unique double shower and raised bath allowing you to overlook the lake; two further double en-suite bedrooms (one a four-poster), and a twin room with its private walk-in marble shower room.

We have a luxury apartment on the second floor offering a further four double bedrooms (two of which can be formed into twin rooms), three bathrooms (one en-suite) and a separate WC. These are designed to meet the highest aesthetic tastes. The south-facing sitting room with its stunning views of the Capability Brown landscape and lake includes a double sofa-bed. There is a small modern kitchen for your convenience and a spacious dining area in the central hallway that can seat 18 guests comfortably.

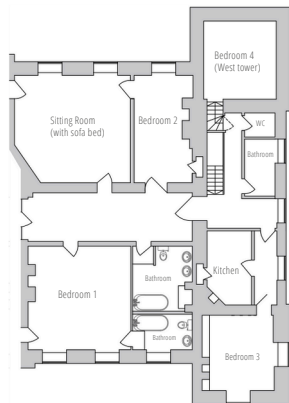
A discount is offered when all of the accommodation is taken.



First Floor



Second Floor





The Garden Cottage

Sleeps 12 (6 Double Bedrooms)

This new addition to the portfolio of event and wedding accommodation and holiday lets on the Kimberley Hall Estate is situated only 360 metres away from the hall and is well suited as a space for families or friends to get together before or after your special occasion. It comprises 6 double bedrooms (4 super-king sized beds can be made into twins), 3 stylish bathrooms (one ensuite to the master bedroom and adjacent bedroom) and a separate downstairs WC. Its large open-plan spaces on the ground floor are perfectly suited for modern living and for those wishing to make a weekend of their time at Kimberley and extend their stay.

The spacious yellow sitting room affords direct access to the private garden with its swing seat and a light and elegant conservatory looks on to its own 1.5 acre mini ancient oak park. The house is extremely comfortable and practical with a study, playroom, larder, utility room and spacious boot room. It has all the amenities plus business-grade super-fast fibre broadband.





The East Wing Apartment

Sleeps 6 (3 Double Bedrooms)

Number One Kimberley Hall is a light and spacious apartment that extends across the entire ground floor width of the north elevation and offers close-by and convenient accommodation for your event or wedding at Kimberley. It is wheelchair accessible and has its own private entrance and parking area. It comprises 3 super-king double bedrooms/zip & link twins, one with an en-suite shower room that is wheelchair accessible. The larger second bathroom has a large cast-iron bath, separate shower and marble-topped twin basins. There is light and airy open-plan fully equipped modern kitchen with a dining room table that seats 6-8, a large north and west-facing drawing room bathed in natural light from four large windows.

When booked for more than one-night, guests have access to a private garden with a summer house, BBQ and historic round pond with fountain.





West Lodge

Sleeps 2-4

This romantic pink gate house is a charming addition to Kimberley Hall's event and wedding accommodation. It has its own private garden which overlooks Capability Brown parkland with magnificent trees, frequented by grazing cattle and deer. It comprises one double bedroom with a sumptuous super-king bed with a beautiful custom-made headboard, a pretty bathroom with arched window looking towards the landscape, a fully equipped kitchen and a 'Tardis' like sitting room with a high domed ceiling and Loaf sofa bed (the equivalent of a standard double bed), period dining table seating 6, large TV and a smart LED log effect burner with sound effects! The garden faces west and is perfect for sundown cocktails with its outdoor table, chairs and umbrella. The property has a small herb garden and fast fibre broadband.





The Walled Garden

Why not hire Kimberley's beautiful walled garden in addition to our estate holiday properties to accommodate your extra guests on site. This is a five-minute gentle stroll from the main house and floodlit for glamping, offering a novel alternative to local hotels. Please contact us if you would like to hire stylish bell tents from our local supplier or bring your own. Includes hot showers and WCs in the old Apple House, power and a mobile phone charging point.



Accommodation

	First Night	Second Night	
First floor in House (sleeps 8)	£990	£594	3 double bedrooms with ensuite bathrooms, 1 twin bedroom with separate bathroom
Second Floor in House (sleeps 8-10)	£1,200	£720	A master double bedroom with ensuite, 3 double bedrooms, 2 bathrooms, separate WC, sitting room with sofa bed, kitchen and dining area
East Wing Apartment (sleeps 6)	£600	£360	3 double/twin bedrooms, 2 bathrooms, sitting room and kitchen
The Garden Cottage (sleeps 12)	£1,920 <i>Minimum 2 nights</i>		6 double bedrooms, 3 bathrooms, separate WC, large sitting room, open-plan kitchen, conservatory with additional dining
West Lodge (sleeps 2-4)	£280	£168	1 double bedroom, 1 bathroom, sitting room with sofa bed and kitchen
East Lodge (sleeps 2-4)	£325	£195	1 Large double bedroom, walk in shower/bathroom, sitting room with sofa bed and kitchen (wheelchair accessible)
The Walled Garden	£1,200	£500	Hot showers, WCs, power and mobile phone charging facility

Please note that many of the beds are super king zip & link so can become twin

All prices inclusive of VAT

Frequently asked questions

How do we book and guarantee our date?

Once you have confirmed your date and filled in the booking form we will require a £2,000 deposit by BACS. This is non-refundable in accordance with our term and conditions. There will be a second instalment due six months before your date and balance due three months before.

Do we contact the registrars?

Yes. As soon as you have a date please check availability by filling in the form on **www.marryinnorfolk.co.uk**. All fees are payable directly to the registrar.

Can we have a marquee?

Yes. We are able to provide a quote for a tent for unlimited numbers

What time must our event finish?

Last orders are 11.30pm with the bar shutting down at 11.45pm. Guests must leave by 12.30am. It is essential to book taxis in advance.

Can guests park overnight?

Yes. You are welcome to move your car to our designated parking area but it must be collected by 11am when the main gates close automatically. Cars are left at the owner's risk.

Can I have a drone?

Yes. We only allow professionals to use drones and require them to provide a copy of their license and PLI.

Can we have fireworks?

Yes. Fireworks are permitted, however each request will be run past the owners and our preferred supplier must be used.

Can we bring in our own florist?

Yes of course, although we have terms and conditions for them to follow.

Frequently asked questions continued

What about wine?

All wine must be purchased from the Kimberley Hall wine list a minimum of 6 weeks before your event. This will be invoiced separately and must be paid on placement of the order. If you wish to provide your own wine, corkage will be charged per 750ml bottle at a rate of £13 for still wine and £17 for all forms of sparkling. We provide a fully-licensed staffed pay bar with card facilities, together with wine and soft drinks. Alcoholic favours incur a corkage charge.

What tables decorations am I allowed to have?

3D scatter gems, bubbles, confetti canons or helium balloons are not allowed in the venue. Candles are permitted as long as the flame is below the top of the vessel it sits in.

Can I/we bring goodie packs for the children?

Yes, but we ask that you use coloured pencils only in children's packs. This is to protect our floors but also to protect your pocket. It is worth remembering that if there are stains on the hired linen which Banqueting Hire are unable to remove, the replacement fee will be deducted from your damage deposit.

Things to remind your guests.....

Please use the following directions to guide your guests to Kimberley Hall.

Guests are advised **not to use the post code** NR18 0RT in sat nav as it has been known to take guests to part of the estate that has no access to the hall. Instead they should use **'Barnham Broom Road, Carleton Forehoe'** and follow the road to the pink gate houses. What3Words is - **lifeboats.throats.city**

Please remind your guests to **pre-book their taxis prior to them arriving** at Kimberley Hall as the phone signal is inconsistent and taxis are not readily available in the local vicinity.

Kimberley Hall

Wymondham

Norfolk


NR18 0RT


**Please contact us if you would
like to arrange a visit**

events@kimberleyhall.co.uk

weddings@kimberleyhall.co.uk

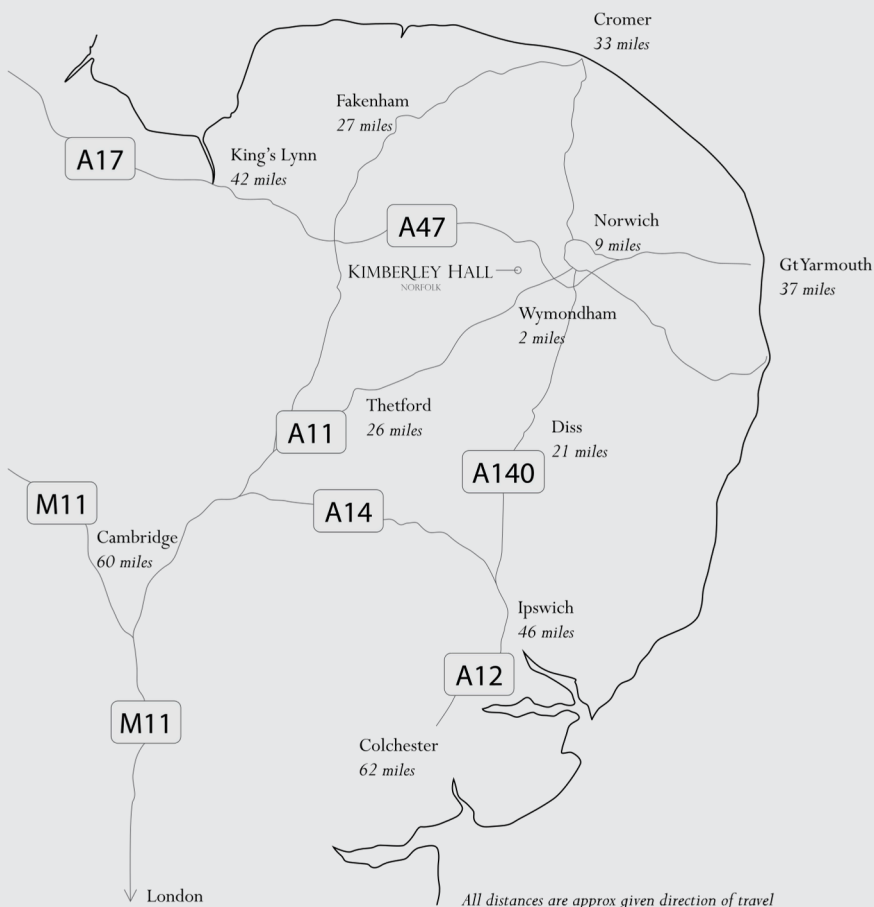
T: 01603 759 447

 @Kimberleyvenue

 @kimberleyhallnorfolk

www.kimberleyhall.co.uk

 /kimberleyhallnorfolk



"Having looked at many venues across Norfolk we decided on Kimberley Hall as it presented such a unique and lovely setting with its fabulous location, fantastic grounds and variety of interior spaces."